

Valarm is a monitoring solution that enables rapid deployment of real-time, mobile, geo-located sensor networks. Valarm connects industry standard sensors to our secure Valarm Tools Cloud server and/or your private network, using readily available commodity hardware.

Valarm telemetry devices stream geo-tagged, time-stamped sensor data to our Valarm Tools Cloud server (SaaS), or to your private network. Use any internet connectivity (e.g., mobile network, radio, satellite, ethernet, WiFi) and power source (e.g., solar, mains). Valarm Tools Cloud makes it easy for you to map, graph, analyze, export, and forward sensor data in real-time to the system(s) of your choosing.

Via our APIs, Valarm sensor data can be instantly integrated into powerful real-time geo-event processing systems, such as the Esri GeoEvent Extension.

Your data may also be conveniently exported to multiple formats, or API-connected to ArcGIS Server, ArcGIS Desktop or ArcGIS Online for big data analysis, warehousing, and decision-support roles.



Water monitoring for an upstream natural gas producer.

Oil & Gas

- » VOCs / Air Quality
- » Gases
- » Vibration / Tilt / Motion
- » Tanks

Ag / Ecology / Environment

- » Water Quality / Pollution
- » Mobile Sensors
- » Micro-Climate
- » Water Usage & Fluid Levels

Facilities & Construction

- » Noise / Vibration
- » Position / Motion
- » Dust / Indoor Air Quality
- » Equipment monitoring

Sensors in General

- » Water, Liquids, Tanks
- » Chemical & Reefer Trucks
- » Switches / Dials
- » 4-20mA, 0-10V sensors

VALARM & ESRI

Valarm is an Esri Silver Partner and participant in the Esri Emerging Business Program.

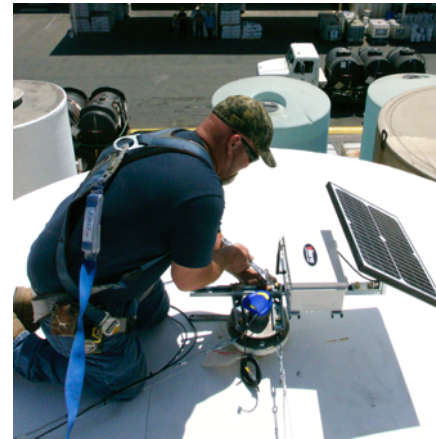




Solar-powered remote sensors monitoring noise and weather at a natural gas compressor station. Northern Pennsylvania.



Monitoring water usage and well depths in the Anza-Borrego Desert. California.



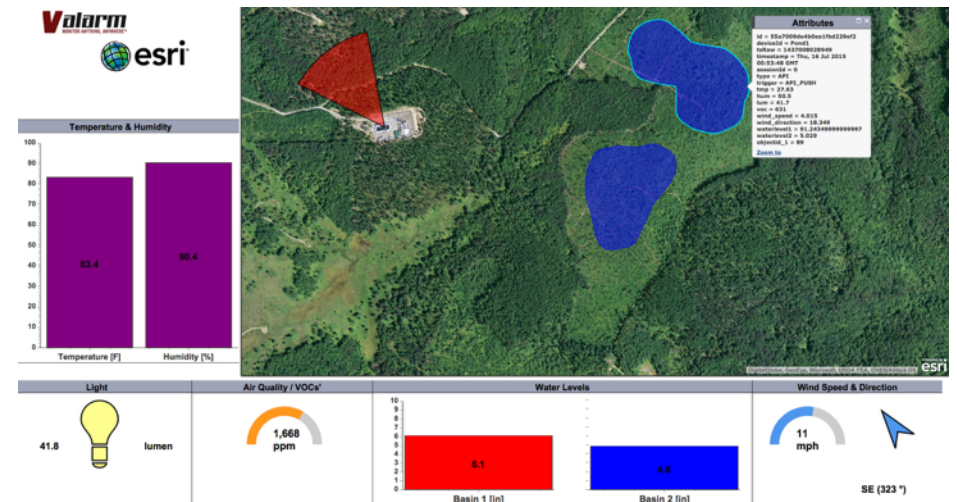
Tank farm monitoring. Ventura, California.



Remote environmental monitoring box with sensors for real-time monitoring of water, liquids, and oil.



The Valarm Tools Cloud server (tools.valarm.net) offers easy mapping, analysis, graphing, APIs, and export of sensor data, with historical query operations and more. Manage your devices and attached sensors from a web browser.



Valarm APIs connect directly to your endpoints like the Esri GeoEvent Extension for ArcGIS Server. Our “push” and “pull” functionalities allow for the creation of real-time, geo-enabled dashboards and situational-awareness monitors.



ABOUT THE COMPANY

Founded in 2012 by brothers Edward Pultar & Lorenzo Gonzalez, Valarm technology is deployed in over 40 countries around the world.

LORENZO GONZALEZ / CEO, Software Architect

Lorenzo has been a software engineer and system architect for over 20 years. He has designed and built large-scale solutions for Ford, Chrysler, IBM, ESPN, Qualcomm, and Farmers Insurance.

EDWARD PULTAR, PHD / President, GIScientist

Edward received his PhD from the University of California, Santa Barbara, where he was the Jack and Laura Dangermond GIS Fellow.