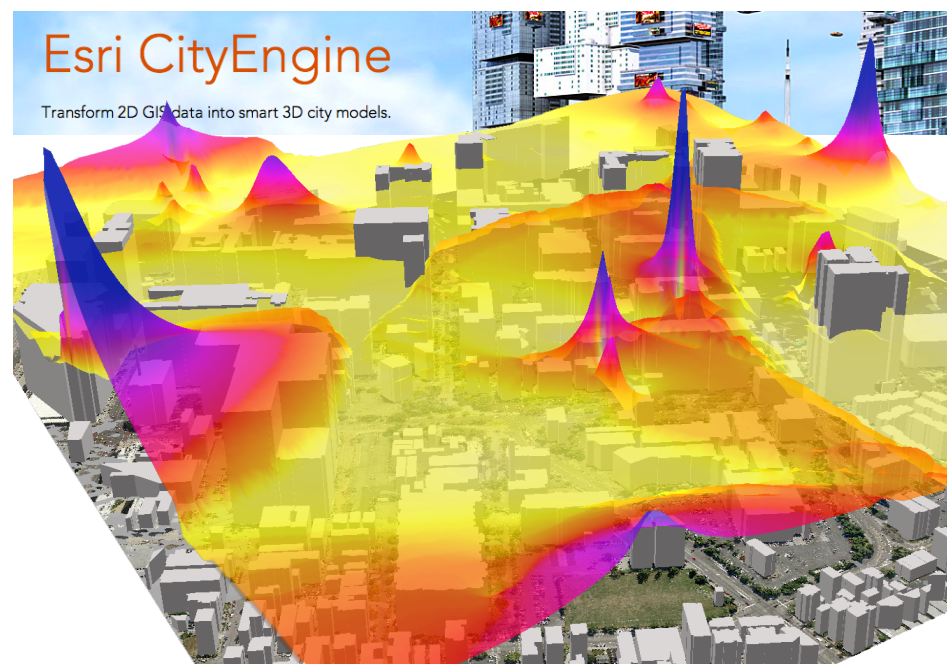


Valarm is a monitoring solution that enables rapid deployment of real-time, mobile, geo-located sensor networks. Valarm connects industry standard sensors to our secure cloud based Valarm Tools server and/or your private network, using readily available commodity hardware. Valarm-compatible hardware includes common Android™ devices and other open hardware platforms from multiple vendors.

Once they are 'Valarm enabled,' devices can stream geo-tagged, time-stamped sensor data to our tools server (SaaS), or to your private network. Our tools server makes it easy for you to map, graph, analyze, export, and forward sensor data in real-time to the system/s of your choosing.

Via our APIs, Valarm sensor data can be instantly integrated into powerful real-time geo-event processing systems, such as the Esri GeoEvent Processor.

Your data may also be conveniently exported to multiple formats, or API-connected to the ArcGIS Server, ArcGIS Desktop or ArcGIS Online for big data analysis, warehousing, and decision-support roles.



Air Quality Study of downtown Los Angeles using Valarm, Esri CityEngine and ArcScene

Petroleum & Gas

- » VOCs / Air quality
- » Hydrogen sulfide
- » Other specific gases
- » Vibration / Tilt / Motion
- » Equipment monitoring

Transport & Logistics

- » Vehicle dynamics
- » Driver behavior
- » Employee location
- » Special equipment
- » Big rigs / Refuse trucks

Facilities & Construction

- » Noise / Vibration
- » Position / Motion
- » Dust / Indoor air Quality
- » Gases - VOCs, CO1, etc.
- » Equipment monitoring

Sensors in General

- » Temperature / Climate
- » Electrical Consumption
- » Switches / Dials / Position
- » Vibration / Tilt / Distance
- » 4-20mA, 0-10V sensors

VALARM & ESRI

Valarm is an Esri Silver Partner and participant in the Esri Emerging Business Program.

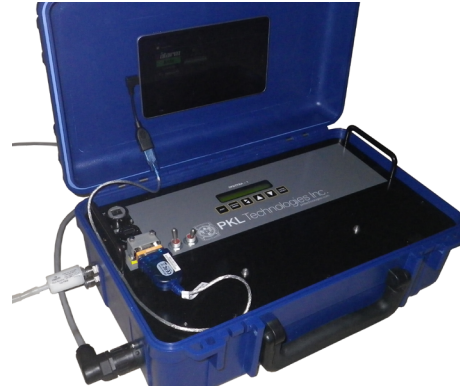


esri

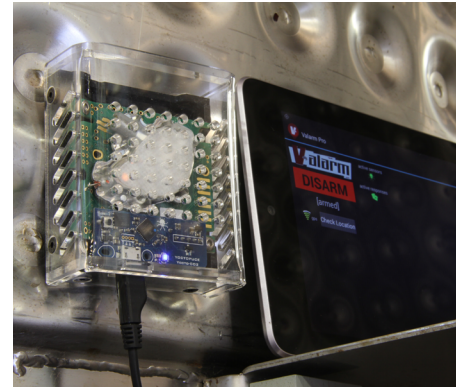
Partner Network
Silver



Optional host hardware by IntelliDesign Australia. This is a self-contained, fully-connected, multi-sensor unit.



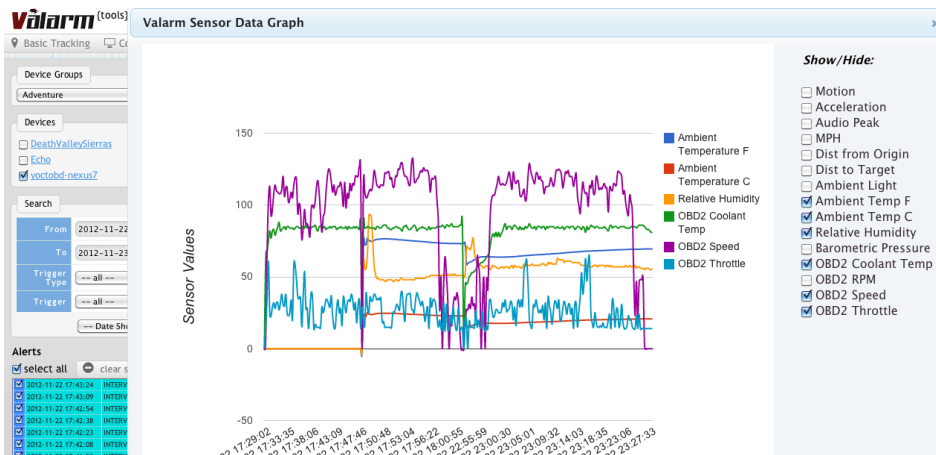
Valarm integrates with the PKL Technologies “Spectra-1 Mobile CH4 Monitor”: Class 1 laser with internal multi-pass sampling cell for fast, high resolution results. H2S, NO3, others also available.



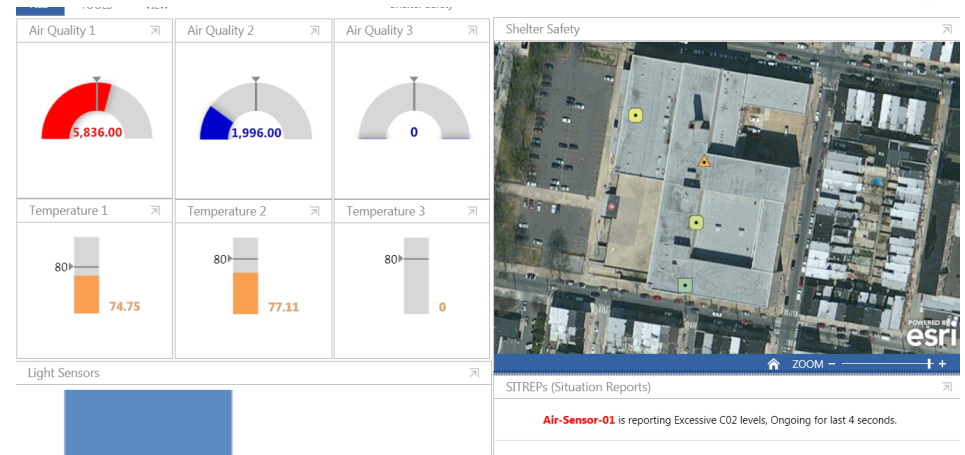
CO2 sensor with Valarm connector app running on a standard Android tablet.



Hyrax PCP-100 DIN-mount Valarm host by Intel-Idesign. Flexible, powerful, ultra-low energy, with integrated WiFi, cellular, and ethernet connectivity.



The Valarm Tools cloud server offers quick analysis, graphing, and export of sensor data, with historical query operations and more.



Valarm APIs connect directly to the Esri GeoEvent Processor. Our “push” functionality allows for the creation of real-time, geo-aware dashboards and situational-awareness monitors.



ABOUT THE COMPANY

Founded in 2012 by Edward Pultar and Lorenzo Gonzalez, Valarm is headquartered in Los Angeles, CA. Valarm is used in 29 countries around the world.

LORENZO GONZALEZ / CEO, Software Architect

Lorenzo has been a software engineer and system architect for over 20 years. He has designed and built large-scale solutions for Ford, Chrysler, IBM, ESPN, Qualcomm, Farmers Insurance and more.

EDWARD PULTAR / President, Spatial Scientist

Edward received his PhD from the University of California, Santa Barbara, where he was the Jack and Laura Dangermond GIS Fellowship recipient.